

September, 2011

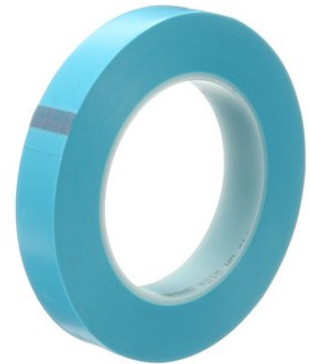
3M™ Scotch® Fine Line Tape 215

Product Description

Scotch® Fine Line Tape 215 is a very conformable film backed tape used to achieve excellent color separation on highly contoured surfaces.

Product Features

- Ideal for many complex shapes and irregular surfaces where paper masking tapes or other plastic tapes do not offer sufficient conformability.
- Resists lifting around corners or in depressed areas.
- Smooth backing for good coverage of the work surface.
- Excellent color line separation.
- Should not be subjected to outdoor applications or prolonged periods of sunlight as tape may become difficult to remove.



3M™ Scotch® Fine Line Tape 215

Technical Information Note

The following technical information and data should be considered representative or typical only and should not be used for specification purposes.

Typical Physical Properties

Property	Values		Method
Color	Blue		
Total Tape Thickness	0.12 mm	4.8 mil	ASTM D3652
Backing	Ethylene / Propylene Copolymer Film		
Adhesive	Rubber		

Typical Performance Characteristics

Property	Values		Method	Substrate	Notes
Peel Adhesion	4.7 N/cm	43 oz/in	ASTM D3330	Stainless Steel	
Tensile Strength	26.3 N/cm	240 oz/in	ASTM D3759		
Elongation at Break	1150 %		ASTM D3759		

Table continued on next page

Typical Performance Characteristics (continued)

Property	Values		Method	Substrate	Notes
Temperature Use Range	Removes cleanly up to 121 °C	Removes cleanly up to 250 °F			Has been laboratory tested on painted steel panels and found to remove cleanly at bake temperatures indicated for 30 minutes. The actual temperature and time performance may be higher or lower for a given application. Clean removal can vary dependent on surface type, processing conditions such as multiple bakes, type of paint involved as well as the temperature of the surface at removal. We recommend testing the product under your conditions to determine if it meets your needs.

Available Sizes

Property	Values	
Standard Roll Length	54.8 m	60 yd

Handling/Application Information

Application Ideas

- Paint masking for automotive fascia.
- Paint masking for riveted surfaces.

Storage and Shelf Life

Store under normal conditions of 70°F (21°C) and 50% R.H. in the original carton.
To obtain best performance, use this product within 12 months from date of manufacture.

3M™ Scotch® Fine Line Tape 215

Trademarks

Scotch is a registered trademark of 3M.

References

Property	Values
3m.com Product Page	https://www.3m.com/3M/en_US/company-us/all-3m-products/~-/Scotch-Fine-Line-Tape-215?N=5002385+3293240940&rt=rud
Safety Data Sheet (SDS)	https://www.3m.com/3M/en_US/company-us/SDS-search/results/?gsaAction=msdsSRA&msdsLocale=en_US&co=ptn&q=215

ISO Statement

This Industrial Adhesives and Tapes Division product was manufactured under a 3M quality system registered to ISO 9001 standards.

3M™ Scotch® Fine Line Tape 215

Information

Technical Information: The technical information, guidance, and other statements contained in this document or otherwise provided by 3M are based upon records, tests, or experience that 3M believes to be reliable, but the accuracy, completeness, and representative nature of such information is not guaranteed. Such information is intended for people with knowledge and technical skills sufficient to assess and apply their own informed judgment to the information. No license under any 3M or third party intellectual property rights is granted or implied with this information.

Product Selection and Use: Many factors beyond 3M's control and uniquely within user's knowledge and control can affect the use and performance of a 3M product in a particular application. As a result, customer is solely responsible for evaluating the product and determining whether it is appropriate and suitable for customer's application, including conducting a workplace hazard assessment and reviewing all applicable regulations and standards (e.g., OSHA, ANSI, etc.). Failure to properly evaluate, select, and use a 3M product and appropriate safety products, or to meet all applicable safety regulations, may result in injury, sickness, death, and/or harm to property.

Warranty, Limited Remedy, and Disclaimer: Unless a different warranty is specifically stated on the applicable 3M product packaging or product literature (in which case such warranty governs), 3M warrants that each 3M product meets the applicable 3M product specification at the time 3M ships the product. 3M MAKES NO OTHER WARRANTIES OR CONDITIONS, EXPRESS OR IMPLIED, INCLUDING, BUT NOT LIMITED TO, ANY IMPLIED WARRANTY OR CONDITION OF MERCHANTABILITY, FITNESS FOR A PARTICULAR PURPOSE, OR ARISING OUT OF A COURSE OF DEALING, CUSTOM, OR USAGE OF TRADE. If a 3M product does not conform to this warranty, then the sole and exclusive remedy is, at 3M's option, replacement of the 3M product or refund of the purchase price.

Limitation of Liability: Except for the limited remedy stated above, and except to the extent prohibited by law, 3M will not be liable for any loss or damage arising from or related to the 3M product, whether direct, indirect, special, incidental, or consequential (including, but not limited to, lost profits or business opportunity), regardless of the legal or equitable theory asserted, including, but not limited to, warranty, contract, negligence, or strict liability.

3M™ Scotch® Fine Line Tape 215



3M United States
3M Center
St. Paul, MN 55144-1000
800-362-3550
www.3M.com

Please recycle.
© 3M 2020. All Rights Reserved.

The brands listed above are trademarks of 3M